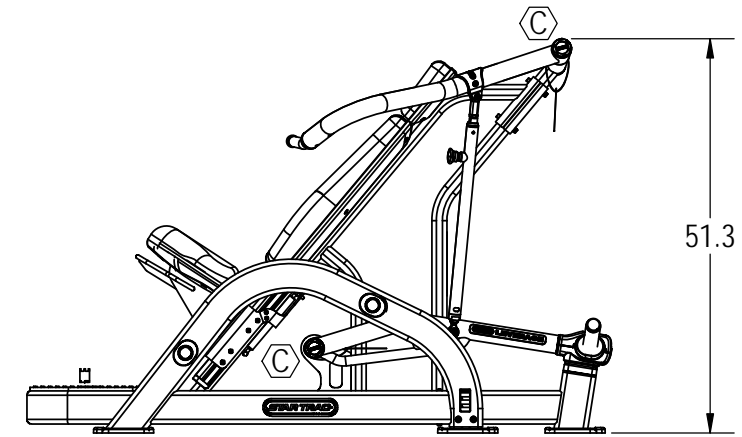
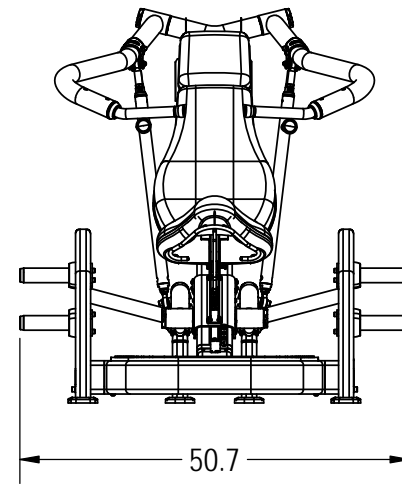
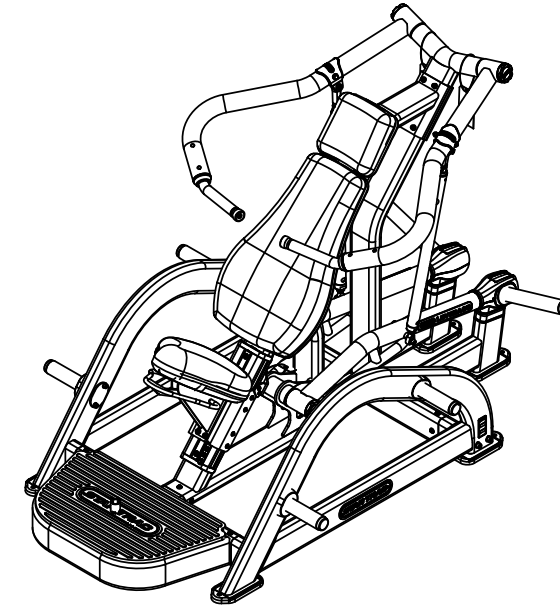
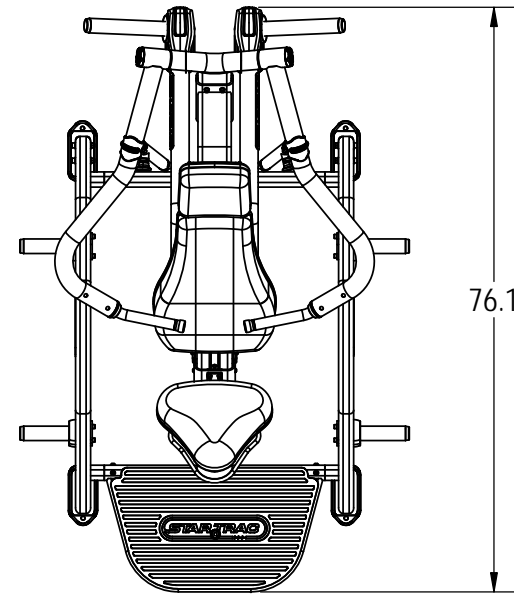


NOTES:

1. ASSEMBLE AND INSPECT PER SOP 620-7918.
2. COLOR DICTATED BY THE SALES ORDER.
 - a. COLOR: -XX COLOR DESIGNATOR AS SPECIFIED IN SOP 620-8222.
 - b. THE -XX CAN RESULT IN ONE COLOR FOR THE METAL SHROUD AND A DIFFERENT COLOR FOR THE METAL FRAME ALSO WITH A -XX LISTED ON THE BOM.
 - c. THE -00XX IS THE COLOR DESIGNATOR FOR UPHOLSTERY.
 - d. THE 5TH DESIGNATOR: "X" WITHIN -XXXXX DEFINES THE HEAD STRAP OR CUSTOM PRODUCTS BRAND. THIS IS SPECIFIED ON SALES ORDERS.
 - e. THE -XXXXX IS CREATED BY COMBINING THE -XX, -00XX AND THE 5TH DESIGNATOR. ALL X'S SHOULD BE DEFINED ON THE SALES ORDER.

REVISION HISTORY				
REV	DATE	DESCRIPTION	ECO	BY
A	5/13/2011	RELEASE FOR PRODUCTION	13530	JJJ
B	11/4/2013	CHANGE TO ONE PIECE WEIGHT HORNS, CHANGE FASTENERS ON ARMS, CHANGE ALL WELDMENT TO -XX, UPDATE ROM TIE ROD ADD 731-1448, 731-1462, 731-3466, 7313958, 731-5256, 731-5259, 731-5272, 731-5725, 731-5777, 731-5806, 731-5960, 731-6056-XX, 731-6057-XX, 731-6060-XX, 731-6062-XX, REMOVE 731-2562, 731-2564, 731-2774-XX, 731-2781-XX	14450	RLH
C	9/12/2014	ADDED CASTLE NUT, COTTER PIN, SETSCREWS	14765	PG



DOCUMENT STATUS:

NOTICE OF PROPRIETARY INFORMATION
 THIS DOCUMENT SHALL NOT BE REPRODUCED NOR SHALL THE INFORMATION CONTAINED HEREIN BE USED BY OR DISCLOSED TO OTHER EXCEPT AS EXPRESSLY AUTHORIZED BY CORE HEALTH & FITNESS, LLC.

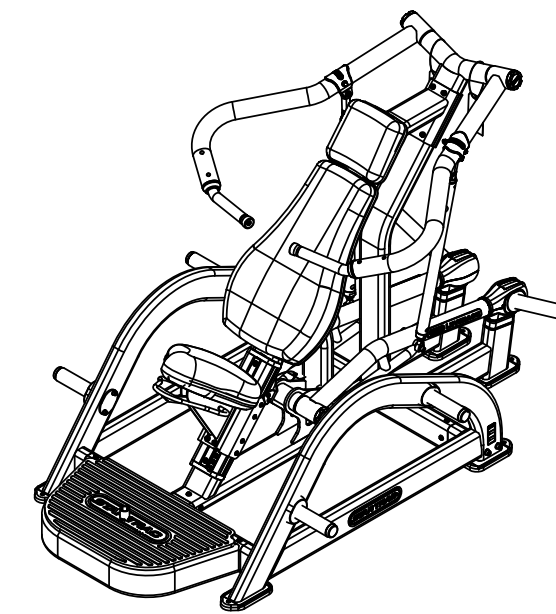
CLASS OF WORK	UNLESS OTHERWISE SPECIFIED DIMS ARE IN mm. TOLERANCES FOR MEASURE OF LENGTH ARE:							ANGLES = ±2°		
	0.5 to 3	> 3 to 6	> 6 to 30	> 30 to 120	> 120 to 400	> 400 to 1000	> 1000 to 2000	> 2000		
FINE	±0.05	±0.05	±0.1	±0.15	±0.2	±0.3	±0.5	----		
MEDIUM	±0.1	±0.1	±0.2	±0.3	±0.5	±0.8	±1.2	±2		
COARSE	±0.2	±0.3	±0.5	±0.8	±1.2	±2	±3	±4		
VERY COARSE	----	±0.5	±1	±1.5	±2.5	±4	±6	±8		

MATERIAL SEE BOM	
FINISH N/A	
VENDOR: N/A	P/N: N/A

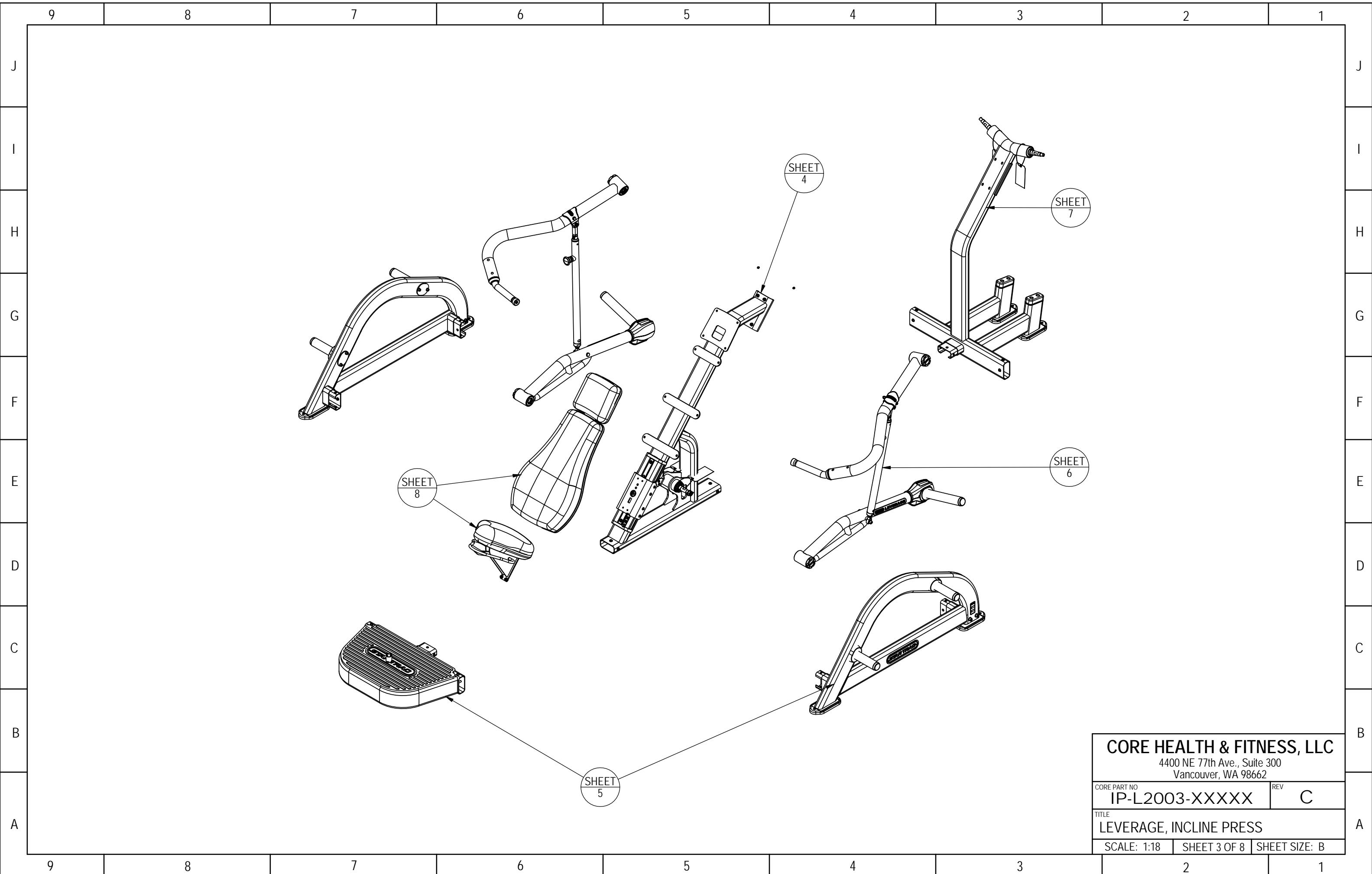
THIRD ANGLE PROJECTION		
DRAWN	INITIAL	DATE
CHECKED		
APPROVED		
	U.O.M.	MM

CORE HEALTH & FITNESS, LLC 4400 NE 77th Ave., Suite 300 Vancouver, WA 98662		
CORE PART NO	REV	
IP-L2003-XXXXX	C	
TITLE LEVERAGE, INCLINE PRESS		
SCALE: 1:25	SHEET 1 OF 8	SHEET SIZE: B

9		8		7		6		5		4		3		2		1	
	ITEM NO.	PART NUMBER	DESCRIPTION	QTY.		ITEM NO.	PART NUMBER	DESCRIPTION	QTY.								
J	1	050-2125-10	STICKER,SERIAL NUMBER,BENCHES	1		61	731-2606	DIE CAST END CAP, L2	2								J
	2	110-3402	SCREW, #8-18, 3/4", HI-LOW, PHT, PH, CS, BO	6		62	731-2607	WEDGE,END CAP,	2								
	3	731-0022-00XX	ASSY,UPHOLSTERY,HEAD REST	1		63	731-2608	BOLT, M8X70mm HSHCS	2								
	4	731-0033	NUT, RIVET,M8 X 1.25	4		64	731-2609	BASE,HANDLE GRIP,ARMS,L2	2								
	5	731-0076	PULL PIN, SEAT ADJ	1		65	731-2610	PLATE,BENT,PIVOT RING	2								
	6	731-0077	LINKAGE,PULL PIN,SEAT ADJ	2		66	731-2614	BALL JOINT, MALE, LEVERAGE	2								
I	7	731-0097-00XX	ASSY,SEAT BOTTOM,STD	1		67	731-2616	NUT,JAM,M16X2.0	4								I
	8	731-0287	NUT,M8x1.25,NYLOCK	4		68	731-2622	BAR,BUSHING,MISS-ALIGNMENT	4								
	9	731-0335	STICKER, MADE IN CHINA, IP	1		69	731-2624	SHOULDER BOLT B18.3M-10X40 SHCC	2								
	10	731-0350	Screw, M10X1.5, 25mm, SHC, HK	2		70	731-2628	STICK,ADJUST,ROM	2								
	11	731-0352	SCREW,M6X0.8,10MM,BHC,HK	4		71	731-2632	BALL JOINT,FEMALE,LEVERAGE	2								
	12	731-0355	WASHER,PLAIN,M8,NARROW	57		72	731-2633	BAR,ROM,SLIDE	2								
	13	731-0359	SCREW,M8 X 1.25,25mm,BHC,HK	24		73	731-2634	BUSHING,ROM,SLIDER	2								
H	14	731-0363	NUT,M10X1.5,NYLOC	4		74	731-2635	SLIDER,ROM,END CAP	2								H
	15	731-0364	SCREW, M8X1.25, 45mm, BHC, HK	1		75	731-2639	TRIM RING	2								
	16	731-0365	NUT,M8 X 1.25,NYLOC JAM	11		76	731-2640-XX	WELD,FOOT,MAX RACK,RH	2								
	17	731-0367	WASHER,PLAIN,M10	14		77	731-2647	FOOT,LONG,LEVERAGE	6								
	18	731-0368	SCREW,M8 X 1.25,40mm,BHC,HK	8		78	731-2648-00XX	ASSY,BACK REST, STD,ONE COLOR	1								
	19	731-0373	WASHER,PLAIN,M6	4		79	731-2649	LABEL, STAR TRAC,DECO,LARGE	2								
G	20	731-0382	ROLL PIN,M6 X 20mm	1		80	731-2657-XX	WELDMENT,SHOULDER,FOOT REST	1								G
	21	731-0383	Cover, Head Rest	1		81	731-2755	LEVERAGE LOGO	2								
	22	731-0385	SHROUD, SEAT BOTTOM	1		82	731-2756	DBL STICK TAPE,LEVERAGE,LOGO	2								
	23	731-0397	SCREW,M8 X 1.25,25mm,FHM,HK	3		83	731-2762	RUBBER BUMPER	2								
	24	731-0421	SCREW, M8 X 1.25, 30MM, SHC, HK, CS	17		84	731-2764-XX	WELDMENT.L2 STOP,INCLINE	1								
	25	731-0510	STICKER,SEAT ADJ,1-9	1		85	731-2768-XX	MID FRAME,INCLINE PRESS,L2	1								
F	26	731-0517	STICKER, WARNING, BOLT DOWN	1		86	731-2776-XX	WELDMENT,ARM,RIGHT,INCLINE	1								F
	27	731-0550-01	COVER,SEAT BACK,STD.,LEFT	1		87	731-2779-XX	WELDMENT,ARM,LEFT,INCLINE	1								
	28	731-0550-02	COVER, SEAT BACK, STD, RIGHT	1		88	731-2784	WELDMENT,ROM ADJUST,STRAIGHT	2								
	29	731-0555-XX	WELD,MOUNT,TROLLEY,SEAT	1		89	731-2786-001	PLACARD,INCLINE PRESS,LEVERAGE 2	1								
	30	731-0557	SPACER,WHEEL,TROLLEY	8		90	731-2856	PLASTIC WEIGHT HORN COVER TRIM INSERT	2								
	31	731-0560	ASSY,WHEEL,41M DIA,TROLLEY	8		91	731-2857	PLASTIC WEIGHT HORN COVER TOP	1								
E	32	731-0561	WASHER,M8,1MM THK	14		92	731-2858	PLASTIC WEIGHT HORN COVER BOTTOM	1								E
	33	731-0562	NUT,M8 X 1.25,NYLOC	8		93	731-2866	PLASTIC,WEIGHT HORN COVER, TOP	1								
	34	731-0564	EXTRUSION,TROLLEY,SEAT	1		94	731-2867	PLASTIC,WEIGHT HORN COVER BOTTOM	1								
	35	731-0565	SCREW,M4X22,FHT,PH,AS,ZP	8		95	731-2969	WASHER,M16,NP	4								
	36	731-0566	CAP,EXTRUSION,SEAT, TOP	2		96	731-3466	ASSY,LEV, BIG PIN	2								
	37	731-0567	BAR,ADJ,SEAT	1		97	731-3958	LEVERAGE NUT TOOL	1								
	38	731-0570	SCREW,M8 X1.25,16mm,SHC,HK	4		98	731-5256	WELD,WEIGHT HORN,SINGLE	4								
D	39	731-0574-XX	MOUNT,SHOCK,SEAT	1		99	731-5259	BUMPER,STOP,WGT	6								D
	40	731-0577	ASSY,SHOCK,SEAT SLED,30LBS	1		100	731-5272	CAP,PLUG,WEIGHT HORN,BLANK	6								
	41	731-0582	SETSCREW, M8 X 1.25, 10mm, CUP	4		101	731-5725	RIVET NUT, HEX HEAD,M8	3								
	42	731-0601	SPRING, EXTENSION, 2.0", 21 LBS	1		102	731-5777	TAG, LEVERAGE, SHAFT, TAB WASHER	4								
	43	731-0672-XX	WELD,SEAT REST,MOUNT -5DEG	1		103	731-5806	WASHER,M8,HAT	4								
	44	731-0674	ASSY,HANDLE,SEAT ADJ -5DEG	1		104	731-5960	TWIST TIE	4								
C	45	731-0842	ASSY, BRG, TAPER, 30205	4		105	731-6056-XX	WELD,L2 WEIGHT FRAME,LEFT	1								C
	46	731-1030	PIN, SPLIT, 2MM X 12	1		106	731-6057-XX	WELD,L2 WEIGHT FRAME,RIGHT	1								
	47	731-1448	NUT,M8x1.25,ACORN	2		107	731-6060-XX	WELD,WEIGHT ARM,INCLINE,L2,RIGHT	1								
	48	731-1450	SCREW,M8 X 1.25,75mm,SHC,HK,AS,ZP	12		108	731-6062-XX	WELD,BENT ARM,INCLINE,L2,LEFT	1								
	49	731-1456-01	PLATE,MOUNT,WGT HOLDER,BLANK	4		109	731-6104	Slotted Hex Nut,Low,M16X1.5mm	4								
	50	731-1458-XX	BRACKET,BOTTOM,FOOT,WT STORAGE	1		110	731-6430	BAR, PIVOT AXLE, L2, LONG	4								
B	51	731-1462	SCREW,M8 X 1.25,80mm,BHC,HK,AS, NKL	2		111	731-6107	PIN, COTTER,3.2mmDIA x 32mm LONG	4								B
	52	731-1713	PIN,CLEVIS,M6 X 22,15.9UL	1													
	53	731-2416	STICKER,STARTRAC,70MM,DECO	2													
	54	731-2575	ASSEMBLY, FOOT PAD, LEVERAGE	1													
	55	731-2580	M10 X 65MM HSHCS	4													
	56	731-2590	END CAP,BEARING, SEAL,	4													
	57	731-2591	O-RING 30X3.55-A	4													
	58	731-2592	SEAL,HOUSING	4													
A	59	731-2595	TAPPER ROLLER BEARING, 30304 GB 297-94	4													A
	60	731-2596	O-RING, BEARING CAP SEAL	4													



CORE HEALTH & FITNESS, LLC		
4400 NE 77th Ave., Suite 300 Vancouver, WA 98662		
CORE PART NO	REV	
IP-L2003-XXXXX	C	
TITLE LEVERAGE, INCLINE PRESS		
SCALE: 1:25	SHEET 2 OF 8	SHEET SIZE: B



CORE HEALTH & FITNESS, LLC
 4400 NE 77th Ave., Suite 300
 Vancouver, WA 98662

CORE PART NO	IP-L2003-XXXXX	REV	C
--------------	----------------	-----	---

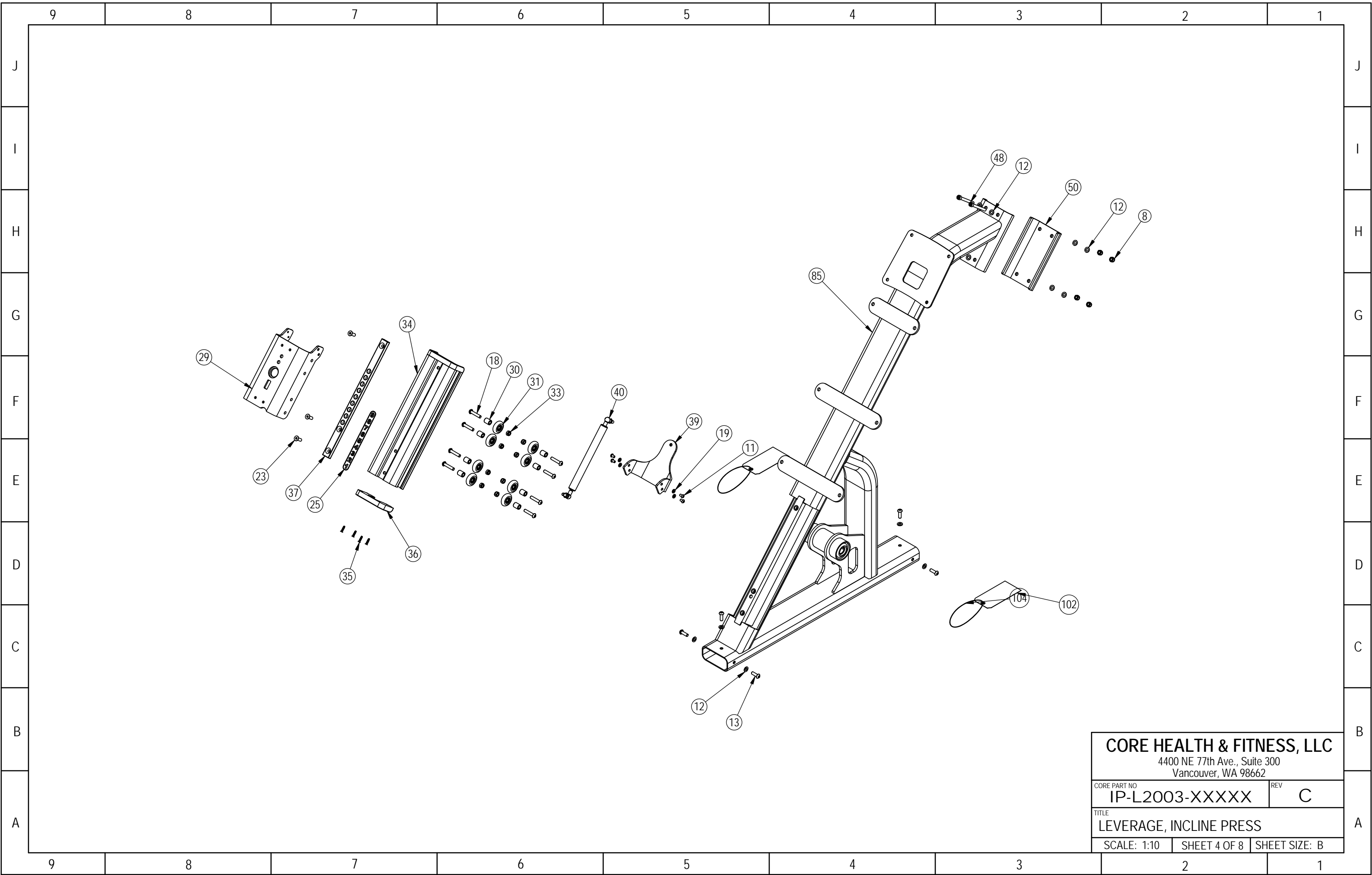
TITLE	LEVERAGE, INCLINE PRESS		
-------	-------------------------	--	--

SCALE: 1:18	SHEET 3 OF 8	SHEET SIZE: B
-------------	--------------	---------------

J
I
H
G
F
E
D
C
B
A

9 8 7 6 5 4 3 2 1

9 8 7 6 5 4 3 2 1

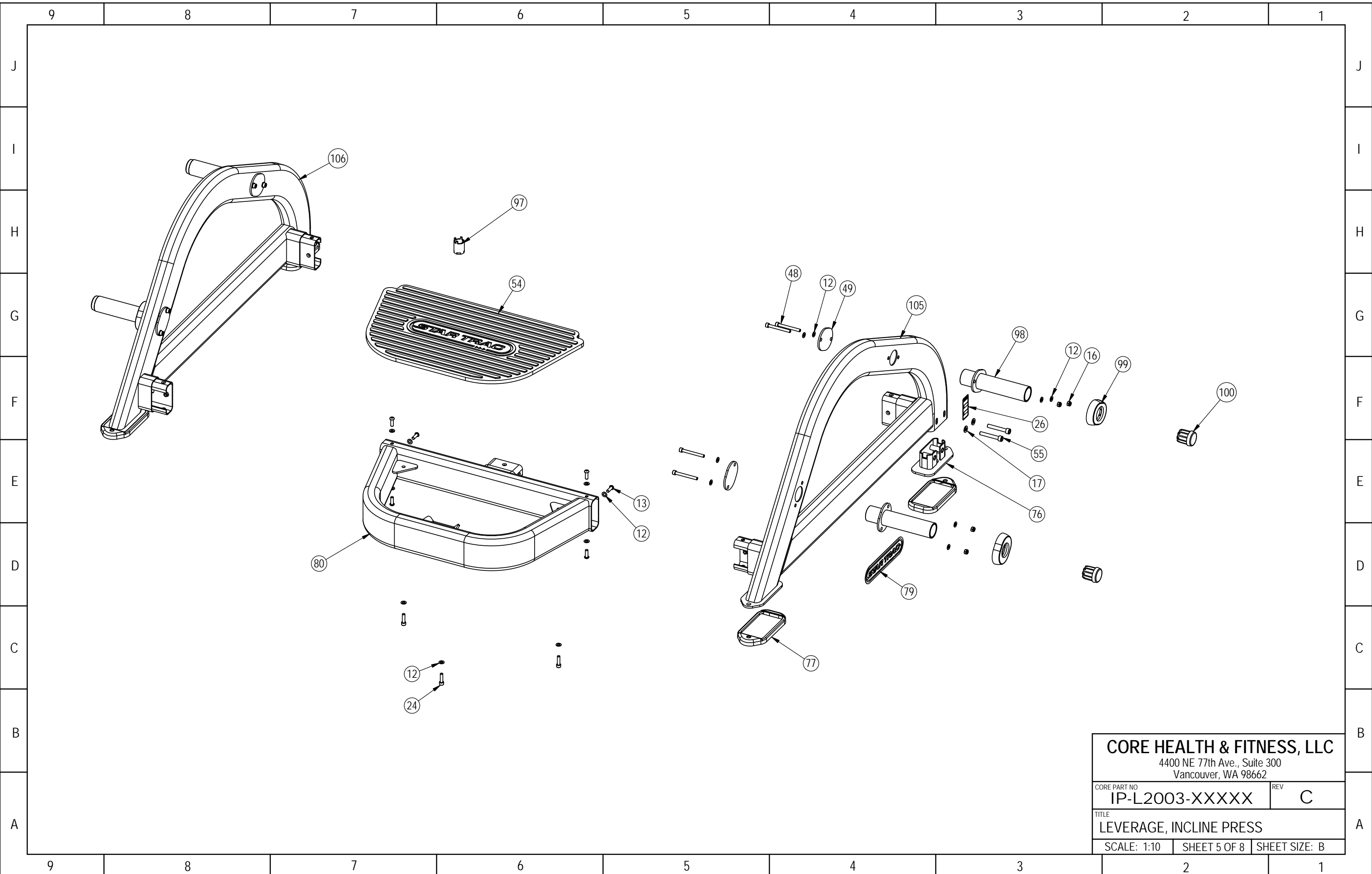


CORE HEALTH & FITNESS, LLC
 4400 NE 77th Ave., Suite 300
 Vancouver, WA 98662

CORE PART NO	REV
IP-L2003-XXXXX	C

TITLE
LEVERAGE, INCLINE PRESS

SCALE: 1:10	SHEET 4 OF 8	SHEET SIZE: B
-------------	--------------	---------------

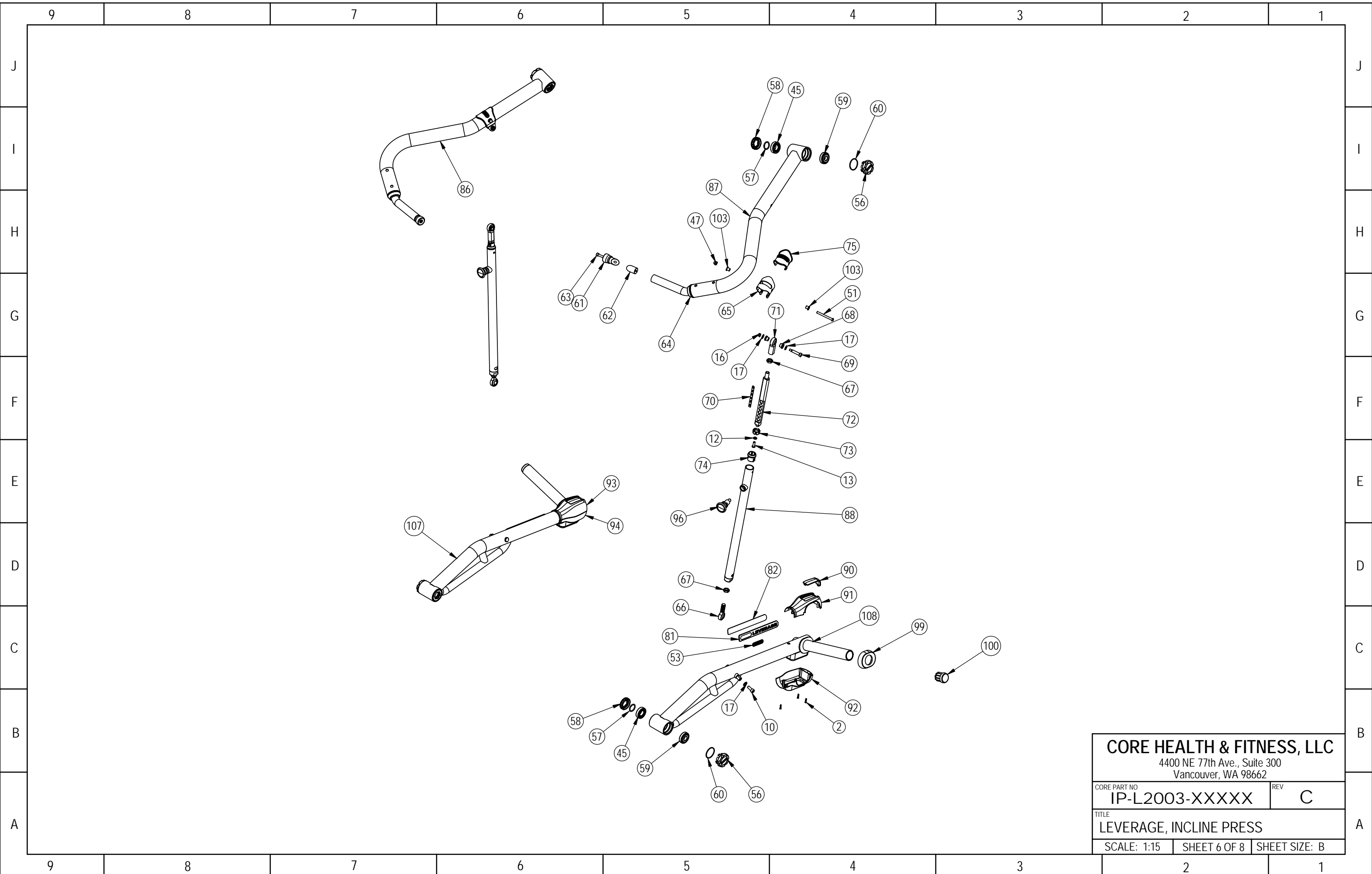


CORE HEALTH & FITNESS, LLC
 4400 NE 77th Ave., Suite 300
 Vancouver, WA 98662

CORE PART NO	REV
IP-L2003-XXXXX	C

TITLE
LEVERAGE, INCLINE PRESS

SCALE: 1:10	SHEET 5 OF 8	SHEET SIZE: B
-------------	--------------	---------------

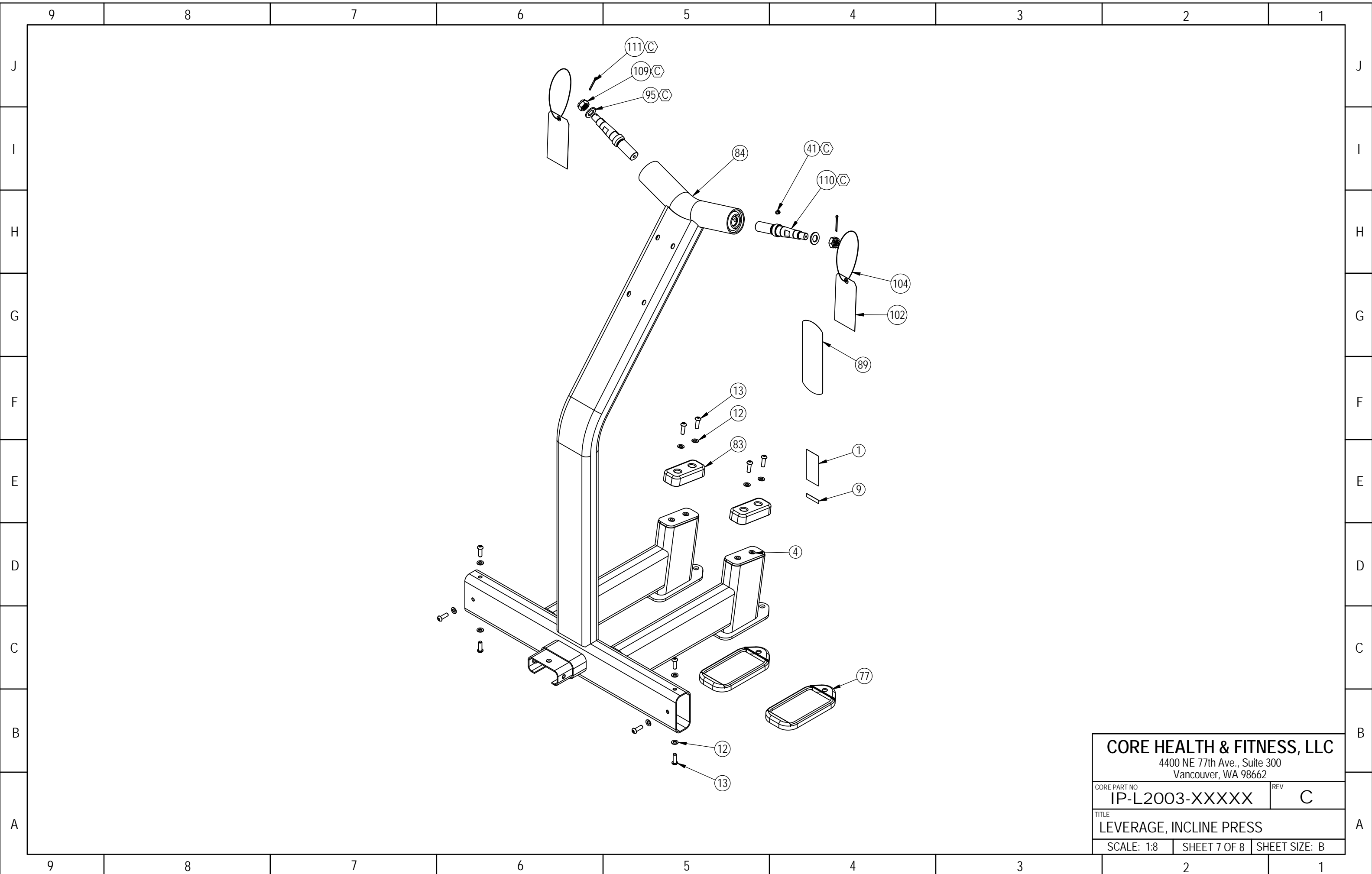


CORE HEALTH & FITNESS, LLC
 4400 NE 77th Ave., Suite 300
 Vancouver, WA 98662

CORE PART NO
IP-L2003-XXXXX REV **C**

TITLE
LEVERAGE, INCLINE PRESS

SCALE: 1:15 SHEET 6 OF 8 SHEET SIZE: B

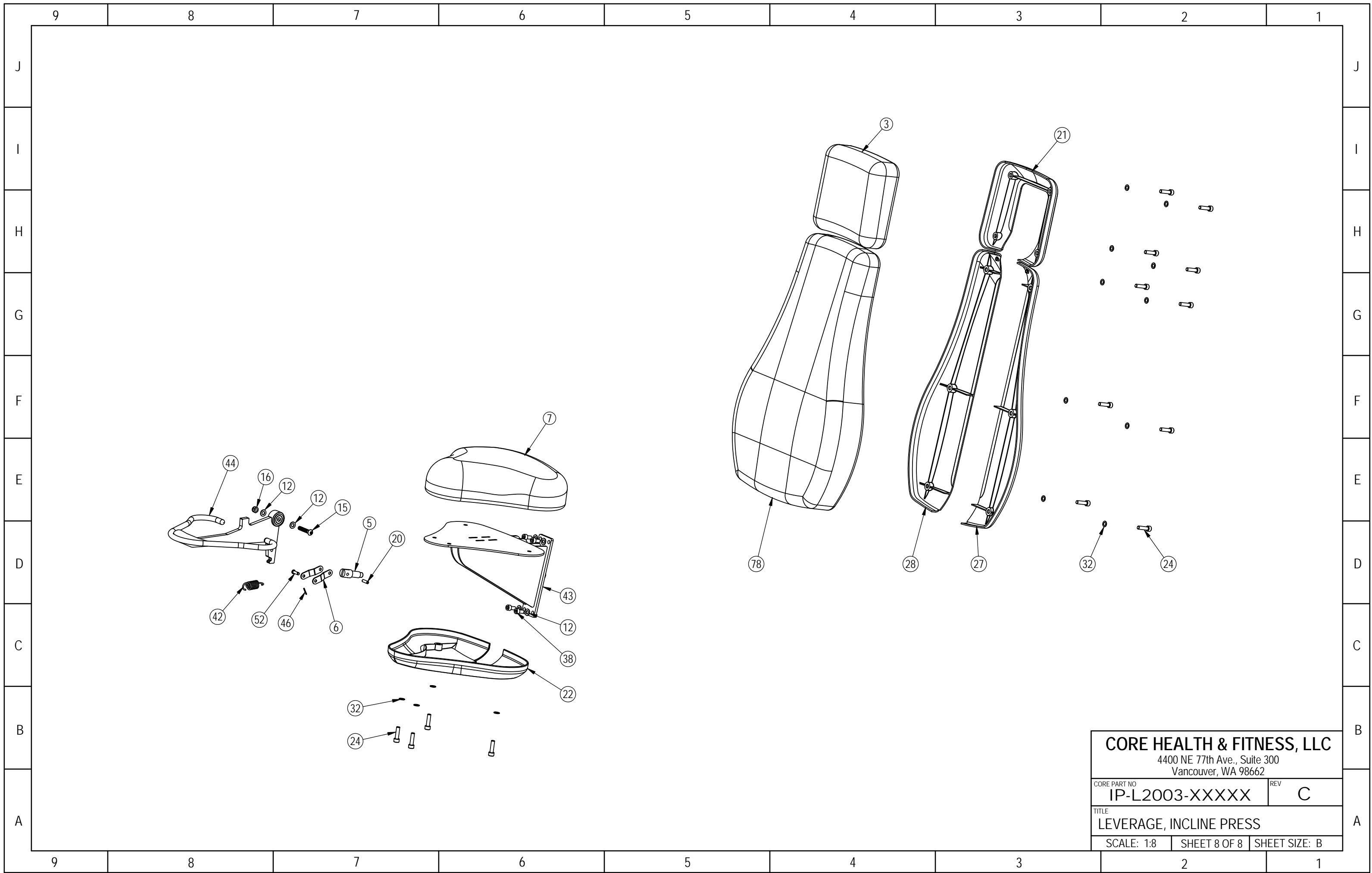


CORE HEALTH & FITNESS, LLC
 4400 NE 77th Ave., Suite 300
 Vancouver, WA 98662

CORE PART NO	REV
IP-L2003-XXXXX	C

TITLE
LEVERAGE, INCLINE PRESS

SCALE: 1:8	SHEET 7 OF 8	SHEET SIZE: B
------------	--------------	---------------



CORE HEALTH & FITNESS, LLC
 4400 NE 77th Ave., Suite 300
 Vancouver, WA 98662

CORE PART NO	REV
IP-L2003-XXXXX	C

TITLE
LEVERAGE, INCLINE PRESS

SCALE: 1:8	SHEET 8 OF 8	SHEET SIZE: B
------------	--------------	---------------